

The Embedded I/O Company



TA205

Pico-Clasp Terminal Block

Version 1.0

User Manual

Issue 1.0.0

May 2016

TEWS TECHNOLOGIES GmbH

Am Bahnhof 7 25469 Halstenbek, Germany

Phone: +49 (0) 4101 4058 0 Fax: +49 (0) 4101 4058 19

e-mail: info@tews.com www.tews.com

TA205-10R

Pico-Clasp Terminal Block

This document contains information, which is proprietary to TEWS TECHNOLOGIES GmbH. Any reproduction without written permission is forbidden.

TEWS TECHNOLOGIES GmbH has made any effort to ensure that this manual is accurate and complete. However TEWS TECHNOLOGIES GmbH reserves the right to change the product described in this document at any time without notice.

TEWS TECHNOLOGIES GmbH is not liable for any damage arising out of the application or use of the device described herein.

Style Conventions

Hexadecimal characters are specified with prefix 0x, i.e. 0x029E (that means hexadecimal value 029E).

For signals on hardware products, an 'Active Low' is represented by the signal name with # following, i.e. IP_RESET#.

Access terms are described as:

W	Write Only
R	Read Only
R/W	Read/Write
R/C	Read/Clear
R/S	Read/Set

©2016 by TEWS TECHNOLOGIES GmbH

All trademarks mentioned are property of their respective owners.

Issue	Description	Date
1.0.0	Initial Issue	May 2016

Table of Contents

1	PRODUCT DESCRIPTION	5
2	TERMINAL BLOCK PIN ASSIGNMENT.....	6
3	ASSEMBLY DRAWING	7

List of Figures

FIGURE 3-1 :	TA205 ASSEMBLY DRAWING	7
--------------	------------------------------	---

List of Tables

TABLE 2-1 :	TA205 TERMINAL BLOCK PIN ASSIGNMENT	6
TABLE 2-2 :	TA205 ADDITIONAL TERMINAL PIN ASSIGNMENT	6

1 Product Description

The TA205 is used as a standard interface to connect TEWS modules with Pico-Clasp connector to other system devices. The Pico-Clasp Terminal Block is therefore an essential wiring interface for prototyping and in the same way for machine and peripheral equipment.

The TA205 has a universal socket and may simply mount on standard EM mounting rails as a compact terminal strip. The screw connections of the used terminal block have a nominal cross section of 2.5 mm².

An additional screw connector provides a possibility to connect i.e. a cable shield with an external case ground.

2 Terminal Block Pin Assignment

Pico-Clasp	Terminal Block	Pico-Clasp	Terminal Block
1	1	16	16
2	2	17	17
3	3	18	18
4	4	19	19
5	5	20	20
6	6	21	21
7	7	22	22
8	8	23	23
9	9	24	24
10	10	25	25
11	11	26	26
12	12	27	27
13	13	28	28
14	14	29	29
15	15	30	30

Table 2-1 : TA205 Terminal Block Pin Assignment

The additional screw terminal block is not connected to any pins of the Pico-Clasp connector. It can be used to connect an external cable shield to the case ground.

Terminal	Descr.
1	e.g. Shield or Case Ground
2	

Table 2-2 : TA205 Additional Terminal Pin Assignment

3 Assembly Drawing

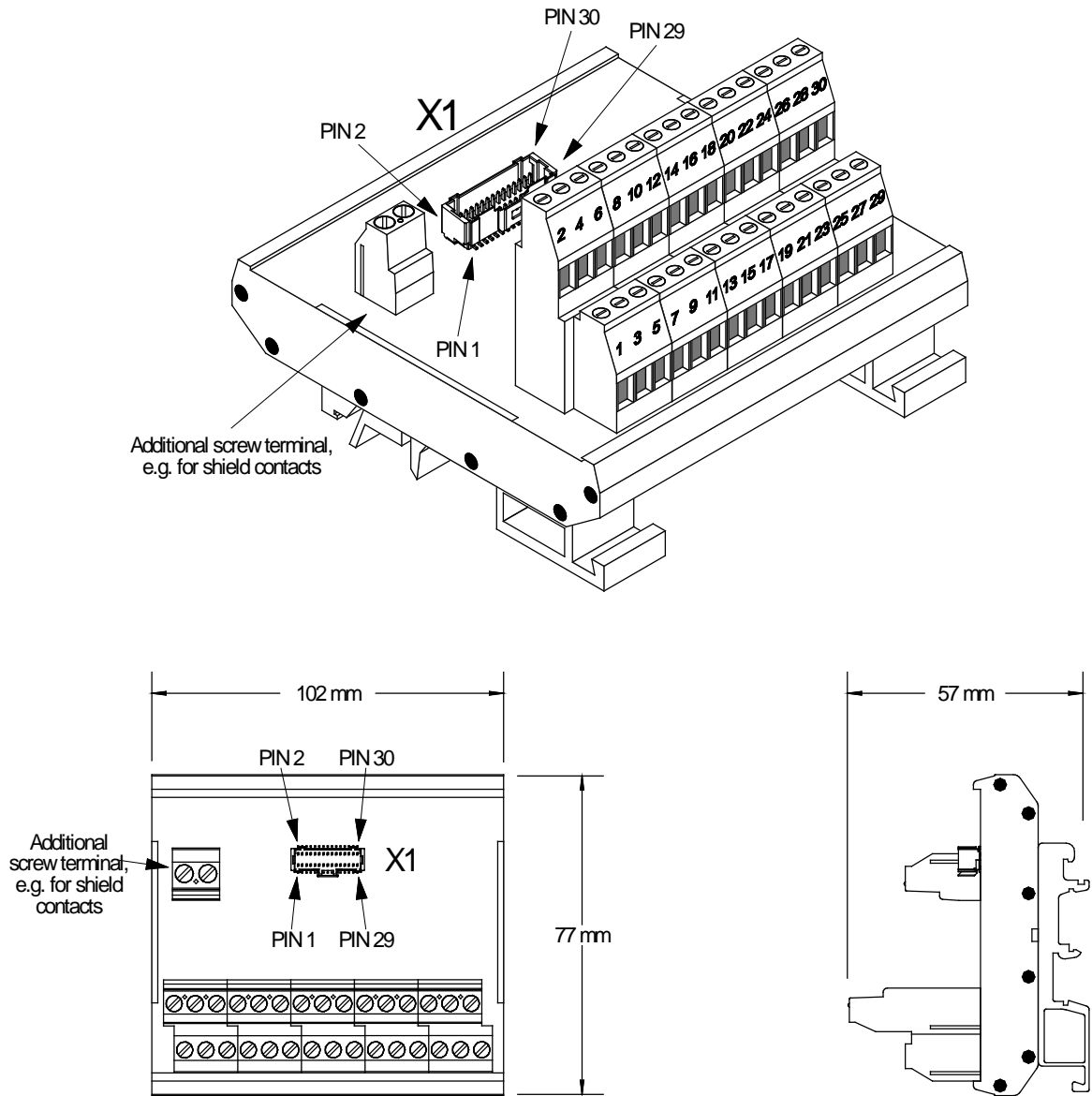


Figure 3-1 : TA205 Assembly Drawing