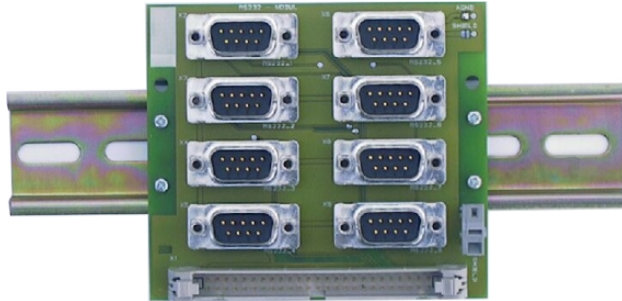
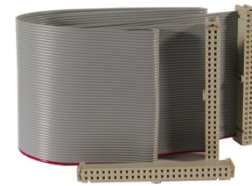


## TIP866-IO DIN Rail Mounting I/O Module (8 x DB9) for TIP866/867



TIP866-IO-10R



TA106-10R

### Application Information

The TIP866-IO is a DIN Rail Mounting I/O module for the serial interfaces TIP866 and TIP867.

The TIP866-IO supports all versions of the TIP866 (RS232, RS422 and TTL-Level interfaces), the TIP867 (RS485 interface) and all versions of the IP-Octal.

Eight DB9 male connectors are mounted on the module.

The TIP866-IO supports TXD, RXD, RTS, CTS and GND for each of the eight channels of the TIP866-10R/11R (RS232 / TTL-Level).

TxD+/-, RxD+/-, GND are supported for the TIP866-20R (RS422) and Dx+/-, GND for the TIP867-10R (RS485).

### Technical Information

- DIN Rail Mounting I/O module, 95 mm x 83 mm
- 8 DB9 male connectors
- Terminal point for shield of all 8 DB9 connectors
- Supports all versions of the TIP866, TIP867 and IP-Octal
- Cable TA106-10R: 0.8m ribbon cable with 50 pin ribbon cable connectors, is included

### Order Information

#### RoHS Compliant

**TIP866-IO-10R** Mounting Rail I/O Module

For the availability of non-RoHS compliant (lead solder) products please contact TEWS.

#### Documentation

**TIP866-IO-10-DOC** User Manual