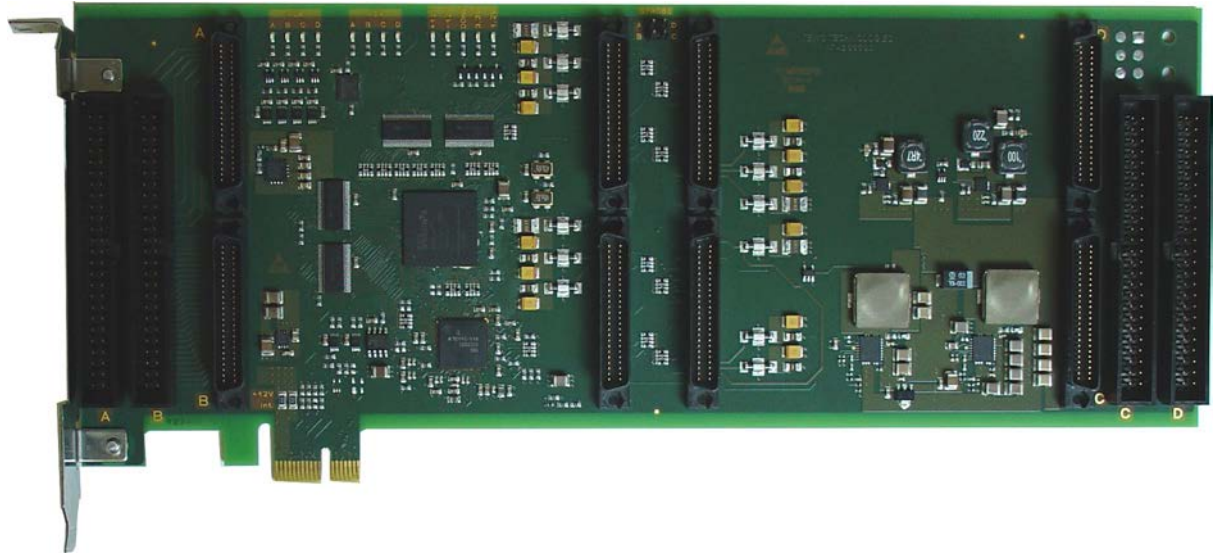


TPCE200 PCI Express Carrier for 4 IndustryPack® Modules



TPCE200-10R

Application Information

The TPCE200 is a standard height PCI Express, Revision 2.0 compatible module that provides four slots for up to four single-size or two double-size IndustryPack (IP) modules used to build modular, flexible and cost effective I/O solutions for all kinds of applications like process control, medical systems, telecommunication and traffic control.

The TPCE200 is a versatile solution to upgrade well known IP I/O solutions to the PCI Express signalling standard.

Four 50-pin 0.1 inch flat ribbon cable connectors provide access to all IP I/O lines. LED status indicators for IP acknowledge, +5V and $\pm 12V$ are provided.

The IP clock speed is selectable between 8MHz and 32MHz for each IP slot separately.

One memory space is provided for each IP, allowing linear addressing for 16-Bit memory on the IP.

The IP power lines are fuse protected by self-healing fuses and RF filtered. The operating temperature range is -40°C to $+85^{\circ}\text{C}$.

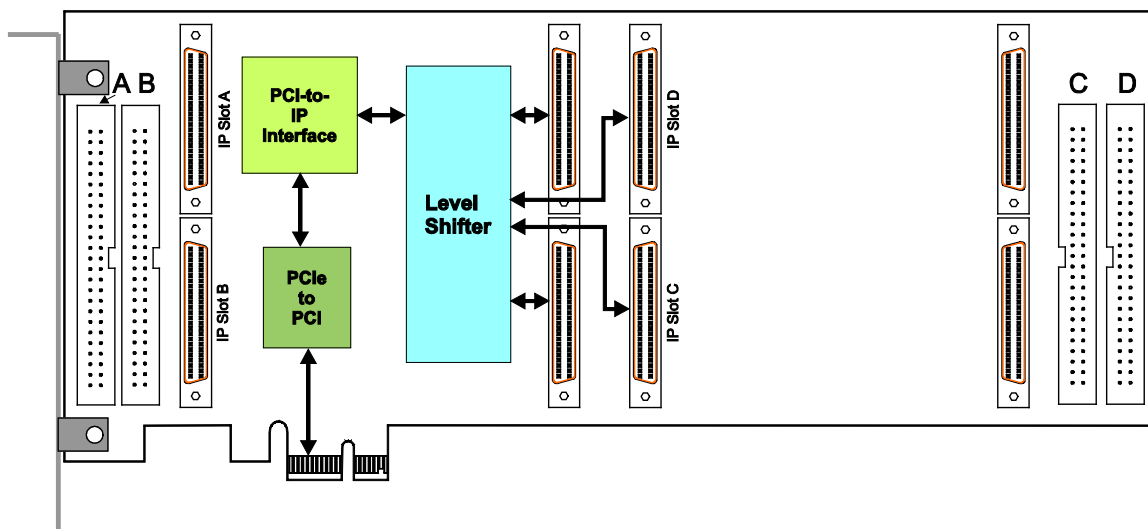
The PCIe edge card connector provides +12V and +3.3V. The TPCE200-10R uses the +12V of the PCIe edge card connector to generate all power supply voltages for the IP slots (+5V, +12V and -12V).

According to the PCIe specification, a PCIe x1 card is limited to 6W on the +12V which allows to operate most of the available IP modules in combination on the TPCE200-10R.

For increased power requirements, the TPCE200-11R offer a PCIe Graphics Power Connector to supply the +12V for generating all the power supply voltages for the IP slots providing power of up to 25W.

Technical Information

- Form Factor: PCI Express x1, Revision 2.0
 - Board size: approx. 263mm x 111mm
- ANSI/VITA 4-1995 compliant interface to IndustryPack modules
 - IndustryPack slots: Up to four single-size IPs or two double-size IPs
 - 8/32 MHz interface, no DMA
 - 8 Mbytes memory space per IP Slot
 - Routing of all IP interrupts to PCIe INTA/MSI, local interrupt status register
 - I/O access: 50-pin 0.1 inch flat ribbon cable connector for each IP slot
- Self-healing fuses and RF filtering on all IP power lines
- Status LEDs
 - ACK LED for each IP module
 - +5V Power LED for each IP slot
 - +12V and -12V Power LED
- Operating temperature: -40°C to +85°C
- MTBF (MIL-HDBK217F/FN2 G_B 20°C)
 - TPCE200-10R: 338000h
 - TPCE200-11R: 315000h



Order Information

RoHS Compliant

TPCE200-10R 4 Slot IndustryPack Carrier, 50 pin ribbon cable connectors, 12V from PCIe connector

TPCE200-11R 4 Slot IndustryPack Carrier, 50 pin ribbon cable connectors, 12V from PCIe Graphics connector

For the availability of non-RoHS compliant (lead solder) products please contact TEWS.

Documentation

TPCE200-DOC User Manual

Software

Carrier-SW-42 VxWorks Software Support (Legacy and VxBus-Enabled Software Support)

Carrier-SW-65 Windows Software Support

Carrier-SW-82 Linux Software Support

Carrier-SW-95 QNX Software Support

For other operating systems please contact TEWS.