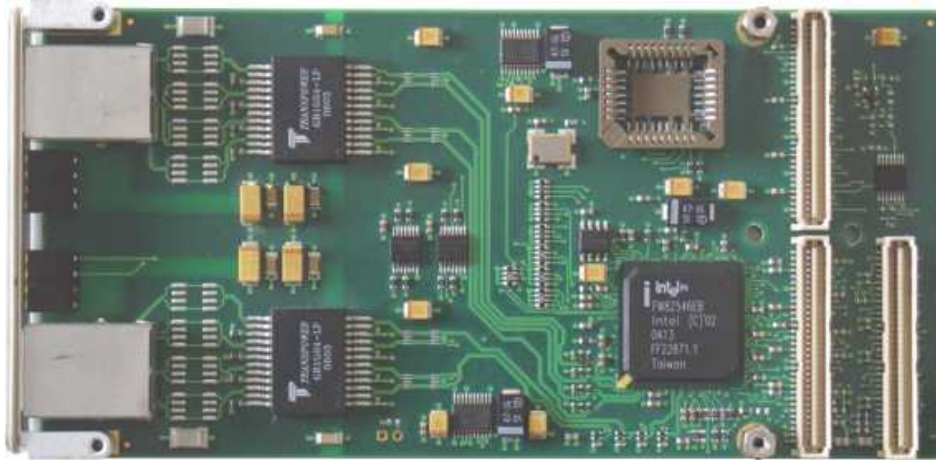


TPMC884 Dual Channel 10/100/1000 Mbit/s Ethernet



Application Information

The TPMC884 is a PCI Mezzanine Card (PMC) compatible module providing a dual channel Gigabit Ethernet 10 / 100 / 1000BASE-TX interface.

For highest data rates, the TPMC884 has a 64 bit, 133/100/66 MHz PCI bus interface and is capable of full speed bus-master DMA operations utilizing maximum PCI bandwidth.

An Intel™ 82546GB Ethernet Controller is used, which supports 10, 100 and 1000 Mbit/s transmission rates for half and full duplex operation. The TPMC884 is capable of performing an auto negotiation algorithm which allows both link-partners to find out the best link-parameters by themselves. The TPMC884 is widely user configurable via configuration and status register access over the PCI bus. Front panel mounted LEDs indicate various network activities.

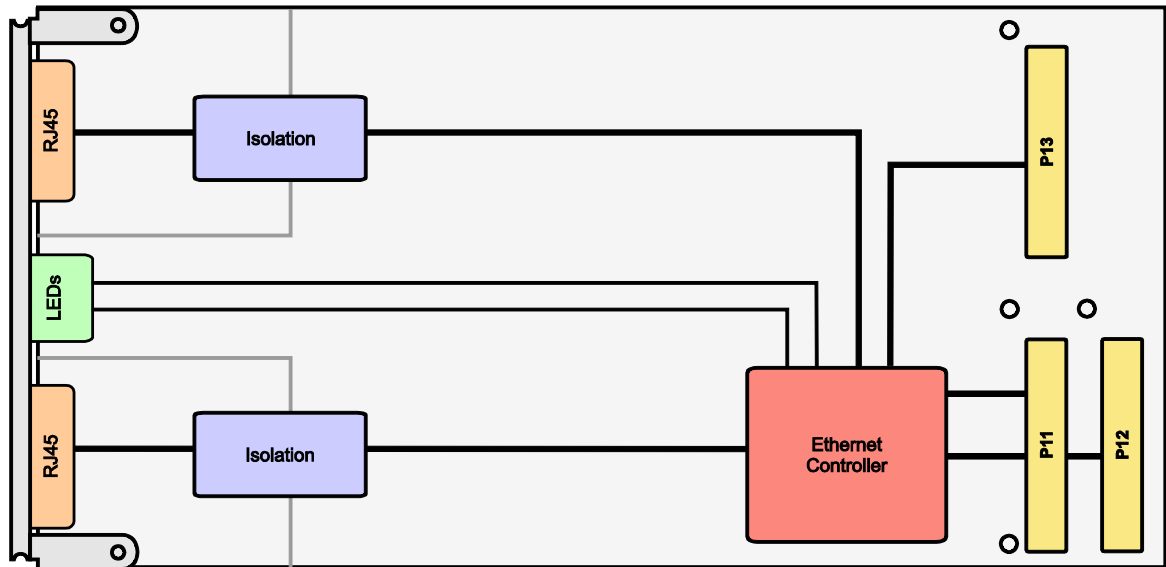
The TPMC884 provides 10/100/1000 Mbit/s network connection via two front panel RJ45 connectors. The ports are galvanically isolated from the Ethernet Controller.

Driver Support:

- Software Support for Windows and several other operating systems is available from Intel.
- For other operating systems please contact TEWS.

Technical Information

- Standard single-width 64 bit PMC module conforming to IEEE P1386.1
- PCI 2.2 (64 bit / 66 MHz) and PCI-X 1.0a (64 bit / 133 MHz) compliant interface
- 3.3V and 5V PCI Signaling Voltage
- Board size: 147 mm x 74 mm
- Two IEEE802.3 compliant Gigabit LAN interfaces
- Support of front panel status LEDs for each channel
- 10BASE-T/100BASE-TX 1000BASE-T interface available
- Half or full-duplex operation
- 64 Kbyte Transmit and Receive FIFOs
- Controller supports DMA cycles as a bus master
- Operating temperature range: 0°C to +55°C



Order Information

RoHS Compliant

TPMC884-10R 2 Channel 10/100/1000BaseT Ethernet Interface, Intel 82546GB, RJ45

For the availability of non-RoHS compliant (lead solder) products please contact TEWS.

Documentation

TPMC884-DOC User Manual