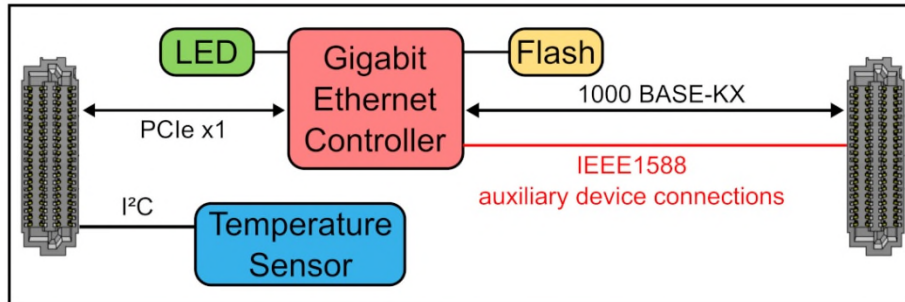


TQMC801 One Channel 1000BASE-KX Ethernet



TQMC800

Application Information

The TQMC801 is a standard single-width QMC module conforming to the VITA 93.0 standard for small form factor (SFF) mezzanine modules. It provides a one channel 1000Base-KX Ethernet interface.

The Intel I210IS Gigabit Ethernet Controller is accessible via PCIe and is equipped with a 16 Mbit Serial Flash to support PXE and iSCSI boot.

The TQMC801 supports IEEE 1588/802.1AS Precision Time Protocol (PTP) and IEEE 802.1Qav Audio/Video Bridging (AVB) traffic shaping (with software extensions).

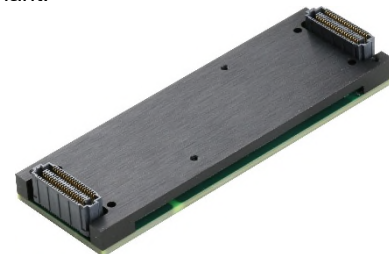
The SDP (Software Definable Pins) of the Ethernet Controller are connected to the QMC's I/O connector for IEEE 1588 auxiliary device connections and LEDs on the board indicate the different network activities.

The TQMC801 has an I²C board temperature sensor to facilitate measurement of the board heat near the Ethernet Controller.

Software Support:

- Software support for Intel I210IS at www.intel.com
- For operating systems not supported by Intel, please contact TEWS Technologies.

The TQMC801 is available as air cooled and conduction cooled variant.



Conduction cooled QMC

Technical Information

- Form Factor: Standard single QMC conforming to VITA 93.0
 - Board size: 78 mm x 25.8 mm
- x1 PCI Express 2.1 Gen 1 compliant interface
- Intel I210IS Gigabit Ethernet controller
- 1000Base-KX
- IEEE 1588/802.1AS Precision Time Protocol (PTP)
 - V1 and V2 PTP frame format
 - auxiliary device support via QMC I/O connector
- IEEE 802.1Qav Audio/Video Bridging (AVB) traffic shaper (with software extensions)
- 16 Mbit serial flash storing configuration data and providing memory for Boot ROM
- Operating temperature -40 °C to +85 °C
- Mean Time Between Failure (MTBF)
 - Contact factory

Order Information

RoHS Compliant

TQMC801-10R-A One Channel 1000 BASE-KX Ethernet, air cooled

TQMC801-10R-H One Channel 1000 BASE-KX Ethernet, conduction cooled

For the availability of non-RoHS compliant (lead solder) products please contact TEWS.

Related Products

TPCE210 2 Site QMC Carrier, PCIe x4, Gen2, low-profile, VHDCI-68 I/O